



WEEKLY HOME STUDY PACKAGE - WEEK 5 02/08/21 – 06/08/21)

Subject	APPLIED TECHNOLOGY	Year/Level	12
Strand	6- Carpentry and Joinery		
Sub-strand	1.3 Woodworking Joints		
Content Learning Outcome	❖ Identify and familiarize with applied engineering skills. ❖ Exhibit competences incorporated in tasks, projects and other artifacts.		

LESSON NOTES/ACTIVITY:

Notes

Woodworking Joints

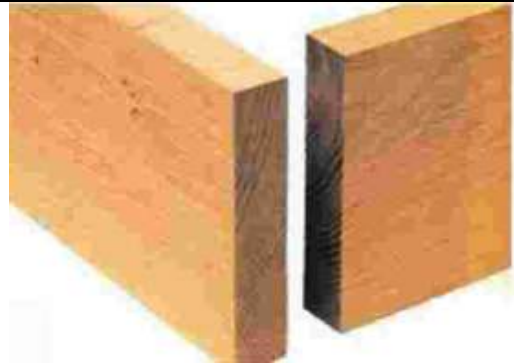
Successful woodwork depends mainly on the correct and accurate joining of pieces of wood.

Edge joints

These joints are used when fitting together two or more pieces of timber to make up a wide surface. For this reason they are often called widening joints.

1. Butt Edge Joint

Is used when a wide board is to be made up of a number of narrow boards glued together, such as table tops and car case ends.



2. Dowelled Edge Joint

This joint is prepared in the same way as the cramped butt edge joint; that is, a slight hollow is planted along the length of the boards. Dowel holes are bored at regular intervals into which dowels are glued and the board glued and clamp together to produce a strong joint.



3. Tongued Edge Joint

This is a strong joint. It is similar to the ordinary butt joint except that a groove is run along the edge of each piece into which a tongue is inserted. For extra strength, the tongue is usually cross-grained or plywood.



Activity

(8 Marks)

1) Define the term woodworking joints?

. (1 Mark)

2) What are edging joints?

. (1 Mark)

3) Define butt edge joint and state its use?

. (2 Marks)

4) Define dowelled edge joint and state its use?

. (2 Marks)

5) Define tongue edge joint and state its use?

. (2 Marks)